

Stroke Clinical Advisory Group

1. Introduction

The London Stroke Clinical Advisory Group is established as part of the governance structure for implementation and delivery of The London Stroke Strategy and follows a public consultation process that led to decisions regarding the case for change, model of care, and configuration of stroke units within London. The group will support the following:

- a. Chair: The London Stroke Clinical Director will chair The London Stroke Clinical Advisory Group, and will be responsible for leading the group in achievement of deliverables. A Network Clinical Lead will chair in the Chair's absence.
- b. Secretariat; Provided through the London Networks, and responsible for:
 - i. Setting meeting dates, times, venues for meetings
 - ii. Distribution of agendas and other material prior to meetings
 - iii. Maintenance of minutes, noted and action plans
 - iv. Other duties as determined by the Chair

2. Purpose of group

The London Stroke Clinical Advisory Group will be responsible for the overall governance of The London Stroke Strategy.

3. Objectives of group

The key objectives of the group are to:

- a. Receive and evaluate information on the performance of the London Stroke Units, Hyper Acute Stroke Units, neurovascular (TIA) services, community rehabilitation services and London Ambulance Service in relation to the service specification, the performance indicators and the expected outcomes.
- b. Review and evaluate the network and individual Trust performance management reports
- c. Escalate severe concerns regarding performance to the appropriate commissioning body with recommendations for further action
- d. Review and make recommendations regarding critical incidents
- e. Evaluate the model of care to ensure it delivers the required outcomes
- f. Set parameters for clinical quality and performance which reflect best practice and world class standards
- g. Provide the stroke and cardiac board with the clinical expertise necessary for its work

4. Deliverables of group

The London Stroke Clinical Advisory Group will be advising the London Networks and the Pan London Cardiac & Stroke Network Board on the clinical aspects of the performance of the London Stroke Units and Hyper Acute Stroke Units through the provision of a quarterly and annual report. It will also make recommendations for action in the event of significantly deficient performance in any of the elements of the system.

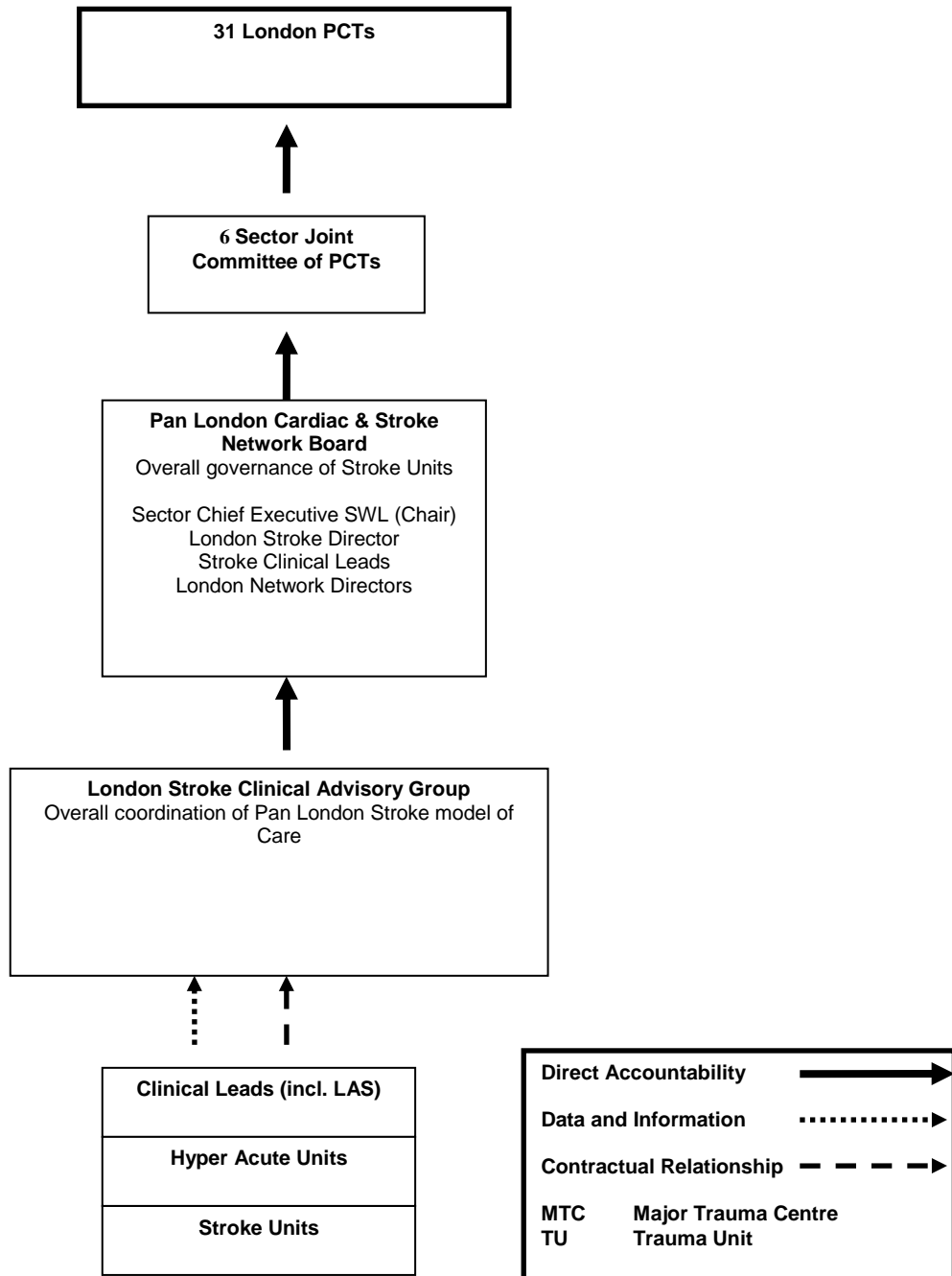
5. Membership

The London Stroke Clinical Advisory Group will meet monthly and consist of;

- 5 Clinical Network Leads
- Representative from London Ambulance Service
- 2 therapy representatives
- 2 nursing representatives Should include primary care
- 1 Community rehabilitation representative
- 1 Imaging representative
- 2 SU Leads
- Representatives from primary care

Stroke Clinical Advisory Group

- Representative from the voluntary sector



6. Governance

Stroke Clinical Advisory Group

7. Conduct of meetings

- a. Quorum; 50% + 1 for agreement of decisions must include the Chair
- b. Frequency and Length of Meetings; as required
 - i. If sending a proxy the secretariat should be informed in advance
- c. Secretariat will send out papers within 6 days where possible

8. Evaluation

Terms of Reference next to be evaluated June 2012