



GRASP – AF

Guidelines and Recommendations on Anticoagulation for Stroke Prevention in AF



NHS Improvement





GRASP – AF

An automated tool to identify patients at high risk of stroke in AF and not on adequate thromboprophylaxis, using existing general practice data.



West Yorkshire Cardiac Network

**Delivered by PRIMIS+
and available via your
Cardiac Network.**

PRIMIS+



The
Information
Centre
for health and social care



AF and the prevention of stroke

AF is very common

At least 1.3 % UK population with known AF
Approximately 600,000 patients in England

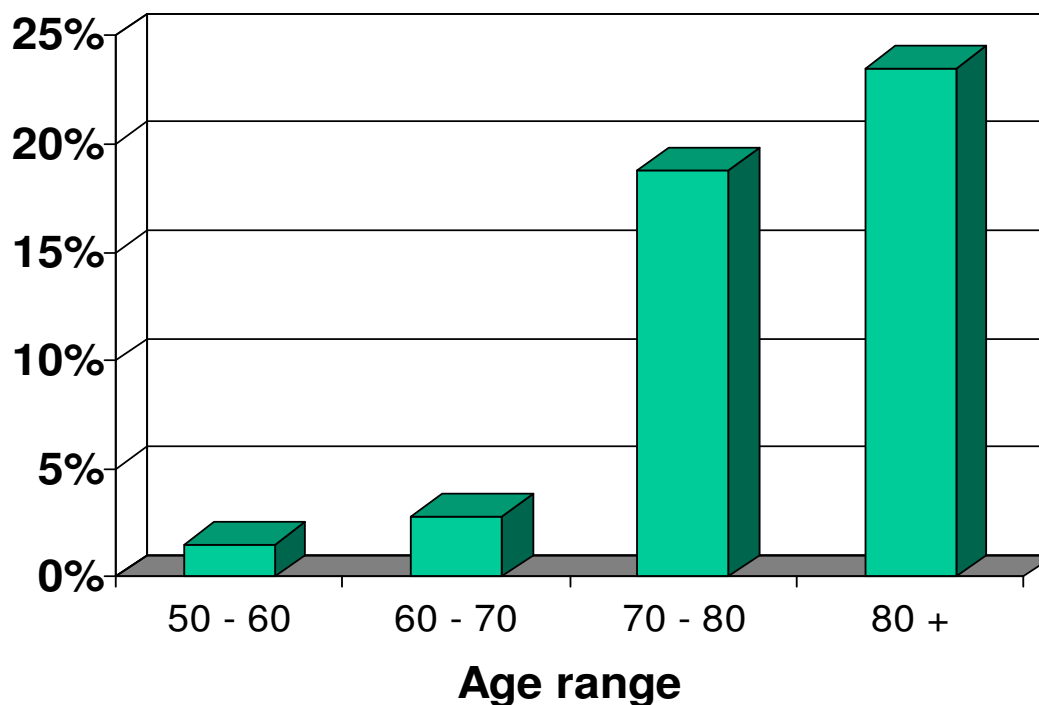
Major predisposing factor to stroke

16,000 strokes annually in patients with AF in England
Of these approx 12,500 are thought to be attributable to
AF

DH figures 2007



% of strokes attributable to AF by Age





Warfarin's superior Efficacy in stroke prevention in AF.

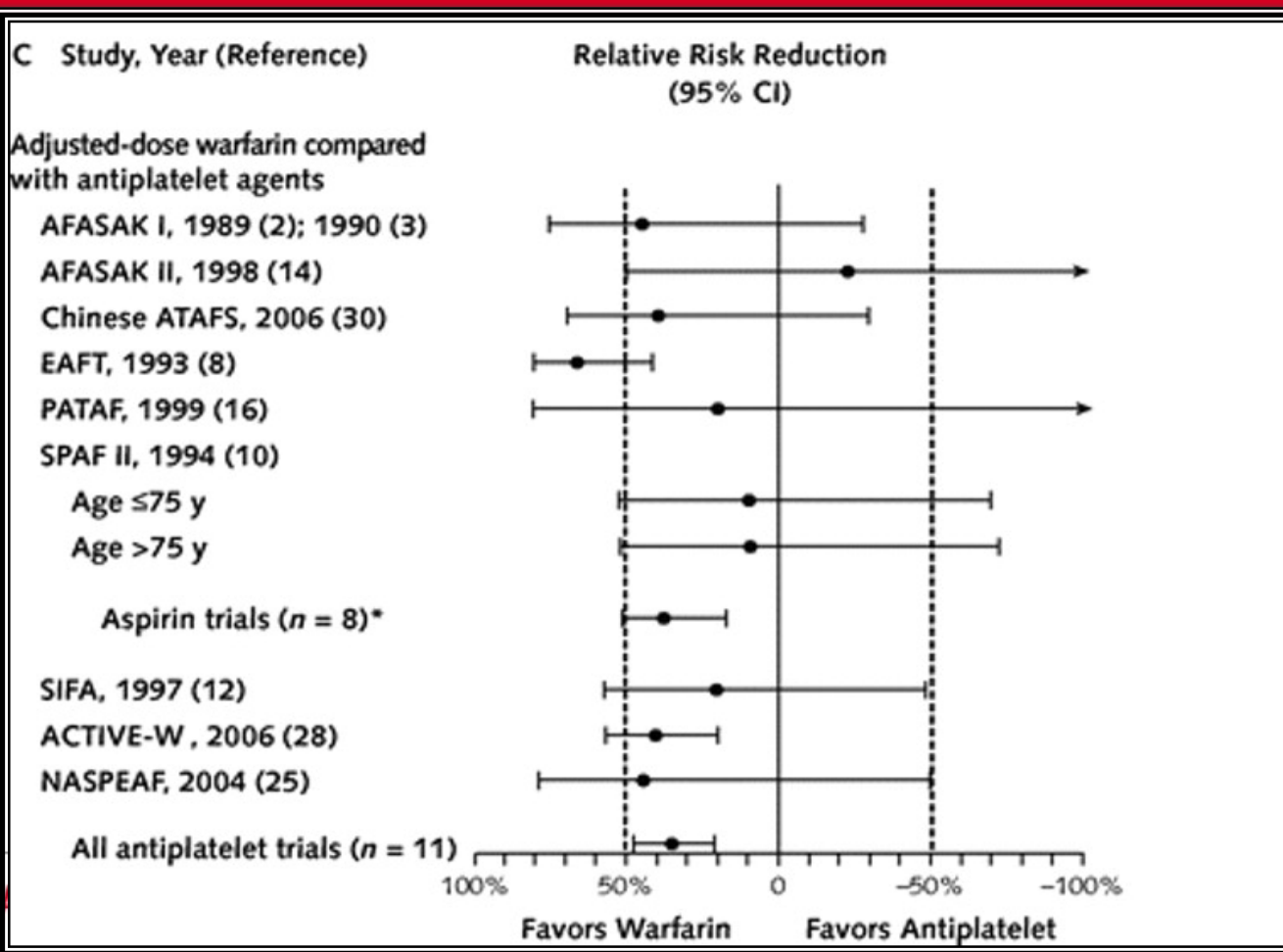
Warfarin reduces stroke risk by
64%

Aspirin reduces stroke risk by
22%



British Heart
Foundation

The Evidence



BEATING HEART

bhf.org.uk



The BAFTA Study & Annual risk of haemorrhage

Warfarin	1.4 %
----------	-------

Aspirin	1.6 %
---------	-------

Warfarin did not increase haemorrhagic risk
in comparison with aspirin



Under use of anti-coagulation in AF

Amongst patients with recognized AF, approx half of those who would benefit from warfarin are receiving it

NICE estimate that of 355,000 patients who should be taking warfarin

189,000 are actually receiving it.

An additional 166,000 should be receiving it

Stratifying Stroke risk in AF

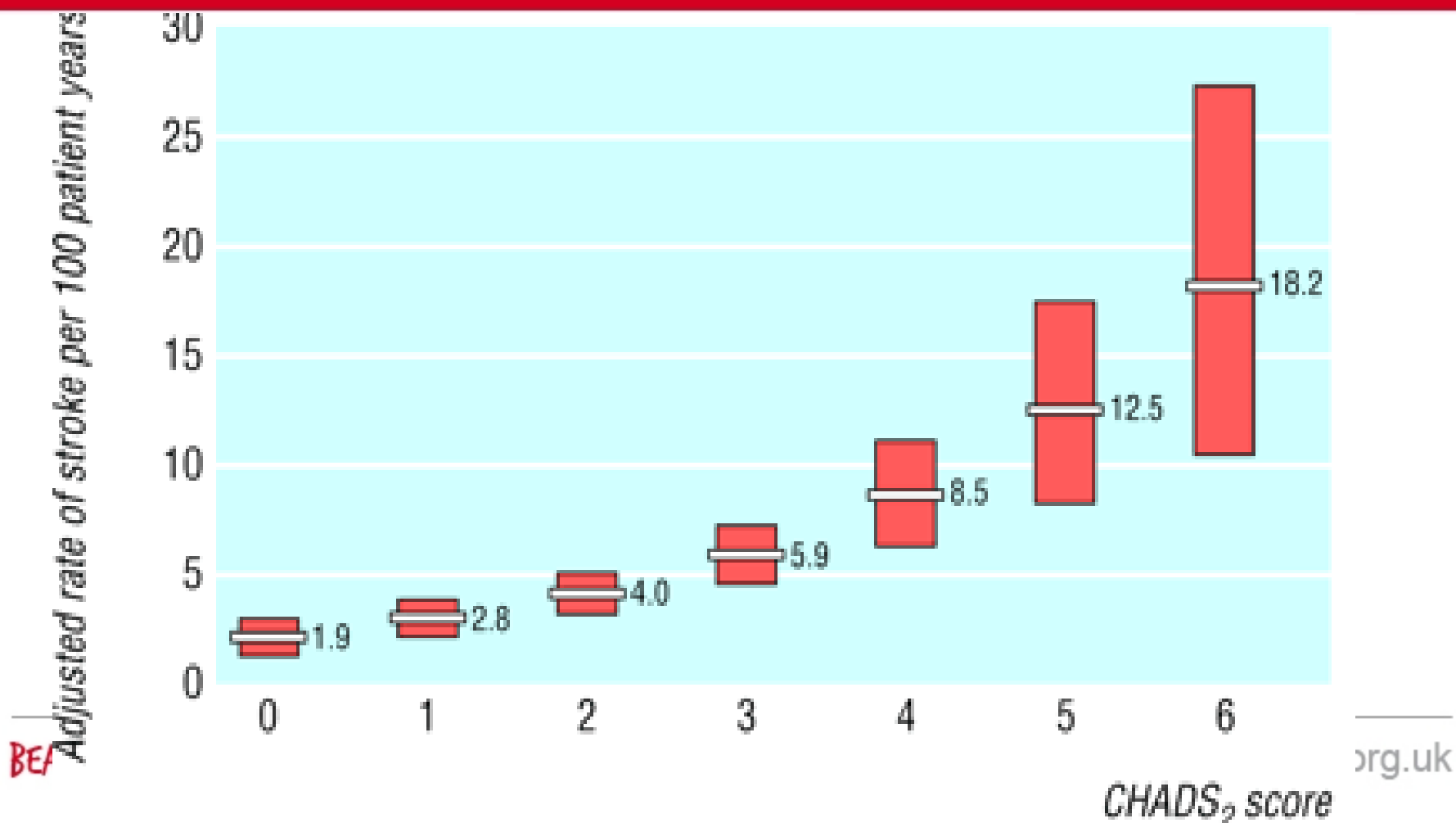
CHADS₂ item	Points
<i>Congestive heart failure</i>	<i>1</i>
<i>Hypertension</i>	<i>1</i>
<i>Age ≥ 75</i>	<i>1</i>
<i>Diabetes</i>	<i>1</i>
<i>Previous stroke or transient ischaemic attack</i>	<i>2</i>



British Heart
Foundation

Absolute risk

Based on CHADS₂ scoring system





When to use Warfarin

CHADS2 score

**Annual
stroke rate**

0

1.9

1

2.8

2

4.0

3

Warfarin

5.9

4

indicated

8.5

5

12.5

6

18.2



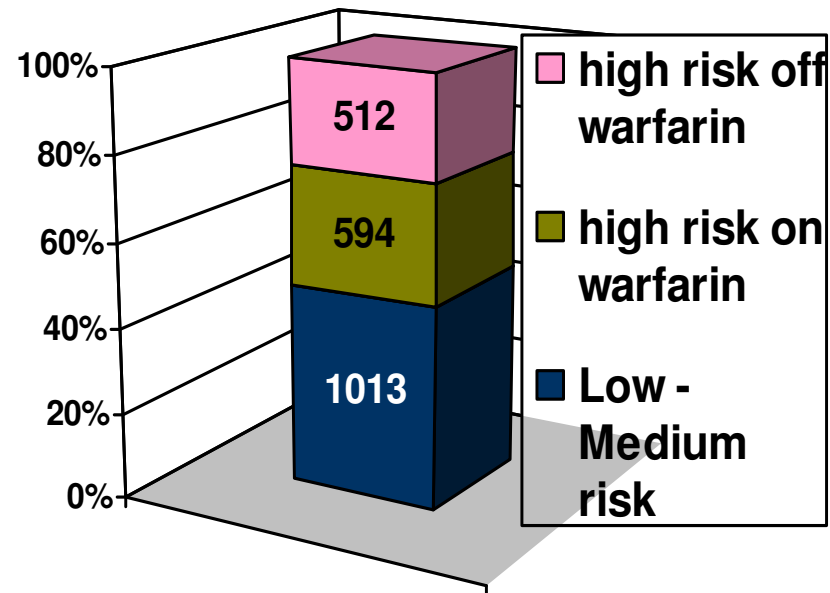
Leeds Stroke Prevention in AF Audit

Combined practice
population of
151000

2119 (1.4%) patients with
AF

1106 (52%) CHADS \geq 2

512 46% CHADS \geq 2
and not on warfarin





How many could convert to warfarin therapy on case note review

		recommendations from arrhythmia Nurse review of notes		
		no contraindications	relative or unclear	absolute contraindications
<i>practice g</i>		19	13	11
<i>practice h</i>		10	14	6
<i>practice i</i>		7	7	4
<i>practice j</i>		9	7	0
<i>practice k</i>		22	14	5
<i>practice l</i>		25	12	16
<i>practice m</i>		11	8	1
<i>practice n</i>		8	7	4
<i>practice o</i>		20	17	11
Total				288
		no contraindications		45%
		relative contraindications		34%
		absolute contraindications		20%



GRASP - AF

Potential of preventing 3000 – 6000 strokes annually across the UK, if applied to GP practices nationally.



British Heart
Foundation

Easy to use

Microsoft Excel - CHART

File Edit View Insert Format Tools Data PRIMIS CHART Window Help

Type a question for help

The University of Nottingham

PRIMIS+
CHART

NHS
Connecting for Health

Care and Health Analysis in Real Time

Running an Audit

1. Select Query Library
2. Tick to copy out full library of queries
Or Select Query to run

[Click for description of query](#)
Reference Date 20/04/2009
Insert clean disk into A: drive
[3. Copy queries to floppy](#)
4. Remove the Disk and run using
MIQUEST on the practice computer

Display Responses

1. Copy the responses to a floppy disk
2. Put the Disk back in this computer
3. [Click here to view new results](#)
or
[Click to view archived results](#)

[PRIMIS+ Support](#)

[Close Application and Databooks](#)

Ready CAPS NUM

BEATING

bhf.org.uk



A matter of minutes to download and run to produce a list of any patients at high risk of stroke in AF and not currently on warfarin, to review with a view to commencing warfarin.

Microsoft Excel - WBook1

AF: Age sex profile

MIQUEST response file AFREPA.CSV was created on 03/07/08 using Refdate 03/07/08

AF_CHADS SCORE AFREPA: Report on patients with AF (Pseudonymised)

Reference	Age	Sex	Registration date	CHADS2 score	Latest warfarin code in L6M	Latest warfarin date in L6M
Du1vCwBEtx	76	M	24/09/...	1	bs17	03/06/08
Du1vCwBtEx	73	M	29/08/...	1		
Du1vCwBEuB	70	M	29/11/...	0		
Du1vCwBEww	78	M	05/02/...	1	bs1A	13/05/08
Du1vCwBwCC	81	M	27/04/...	3	bs18	16/06/08
Du1vCwB1Dv	70	F	21/04/...	0		
Du1vCwB1v1	81	F	24/09/...	2	bs18	07/05/08
Du1vCwBCxu	94	M	05/07/...	09/05	3	
Du1vCwBtEu	79	M	28/04/...	1		
Du1vCwBDuD	84	F	21/07/...	2		
Du1vCwBuCt	90	F	03/11/...	1		
Du1vCwB1Et	64	F	25/09/...	1	bs1A	13/06/08
Du1vCw11xx	80	F	16/06/...	2		
Du1vCwu1xx	89	M	08/04/89	1		
Du1vCwtuux	73	M	13/03/81	0	bs19	16/05/08
Du1vCwDDBx	74	M	29/01/82	0	bs19	20/06/08
Du1vCw1Cx	65	F	02/11/81	0		
Du1vCwssCx	76	M	22/10/82	2		
Du1vCwuvvx	81	M	04/03/71	1		
Du1vCwvtx	90	F	05/05/94	4		
Du1vCwttxB	70	F	20/10/94	1		

Filter Management

Select a filter to load. Active filters have text in the box. Then press 'Load'!

- Filter 1 High risk not on warfarin
- Filter 2 Medium risk not on warfarin
- Filter 3 On Warfarin with history of haemorrhagic stroke
- Filter 4 Patients with reasons for not being on warfarin
- Filter 5

Load Clear Filter Cancel

Preparing the Summary Sheet...

start Internet Explorer Presentation1 Novell GroupWise ... Windows Expl... Microsoft Excel - ... 11:53

BEATING HEAR

bhf.org.uk